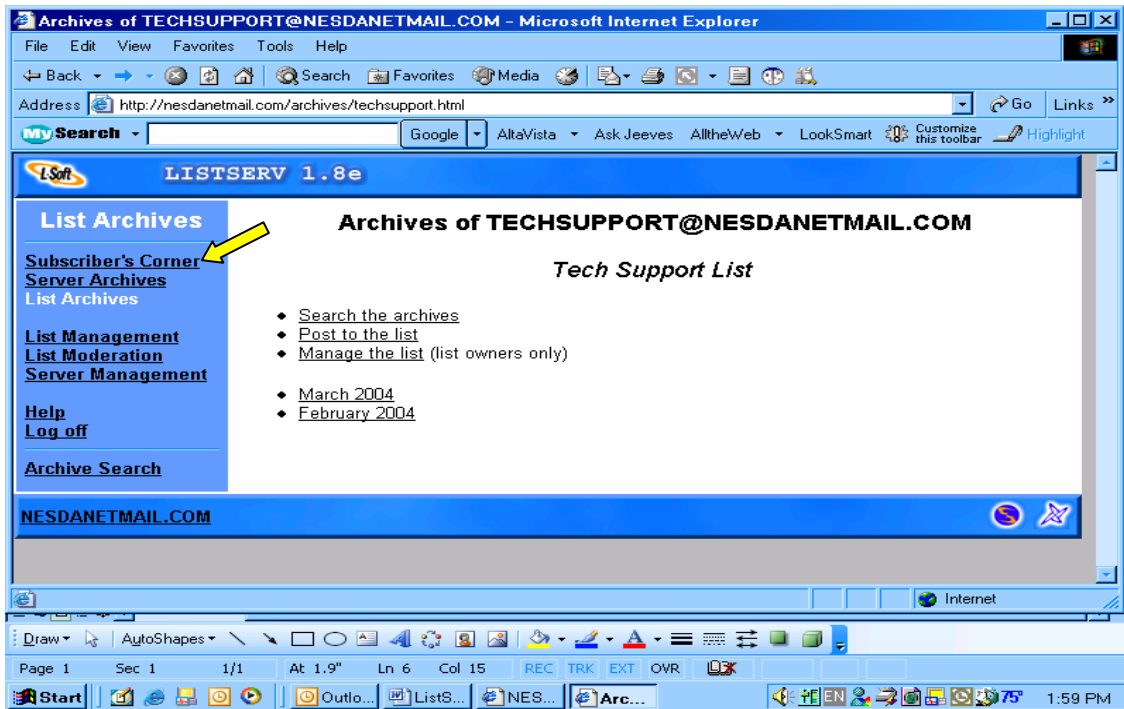
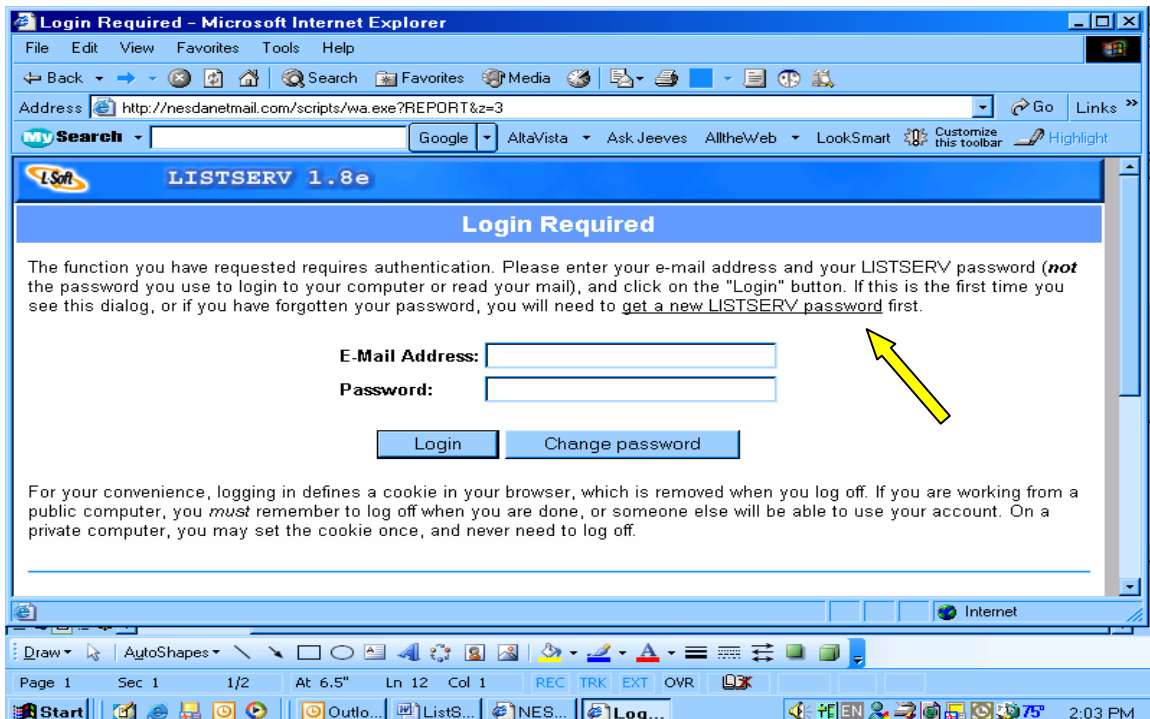


Password Initiation

- Go to www.nesda.com
- Click on “NESDAnet”
- Click on the “TechSupport List” link
- Click on the “Subscriber’s Corner” link

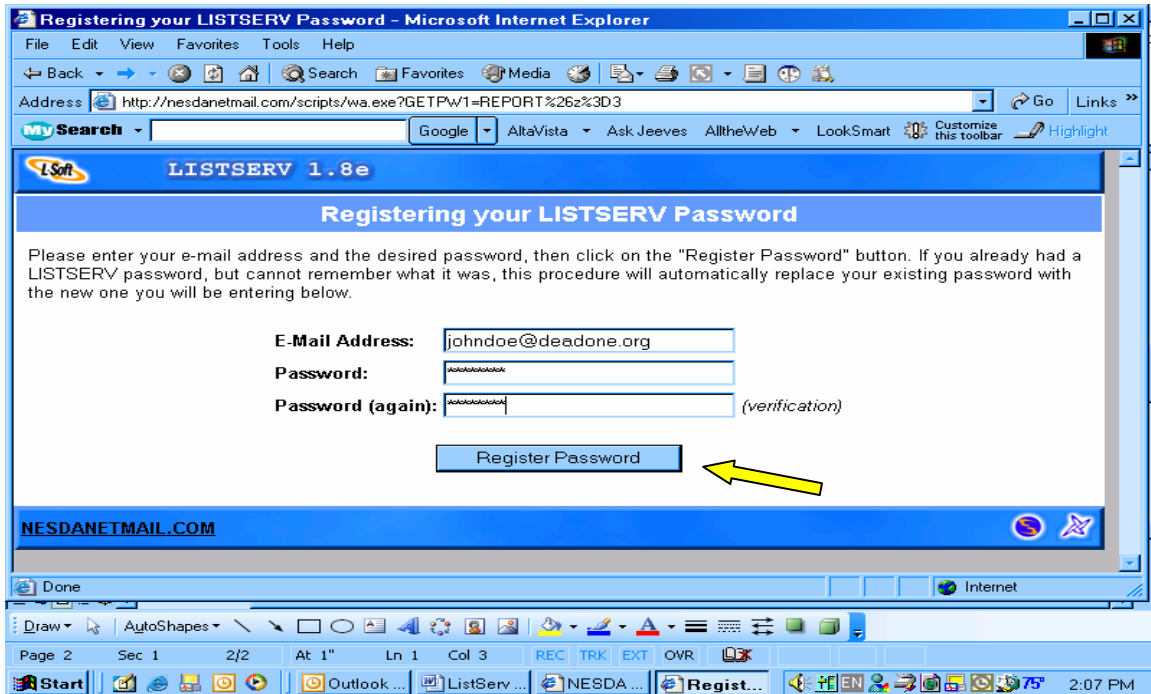


- Click on “get a new LISTSERV password”



- Type in your email address and the password you wish to use

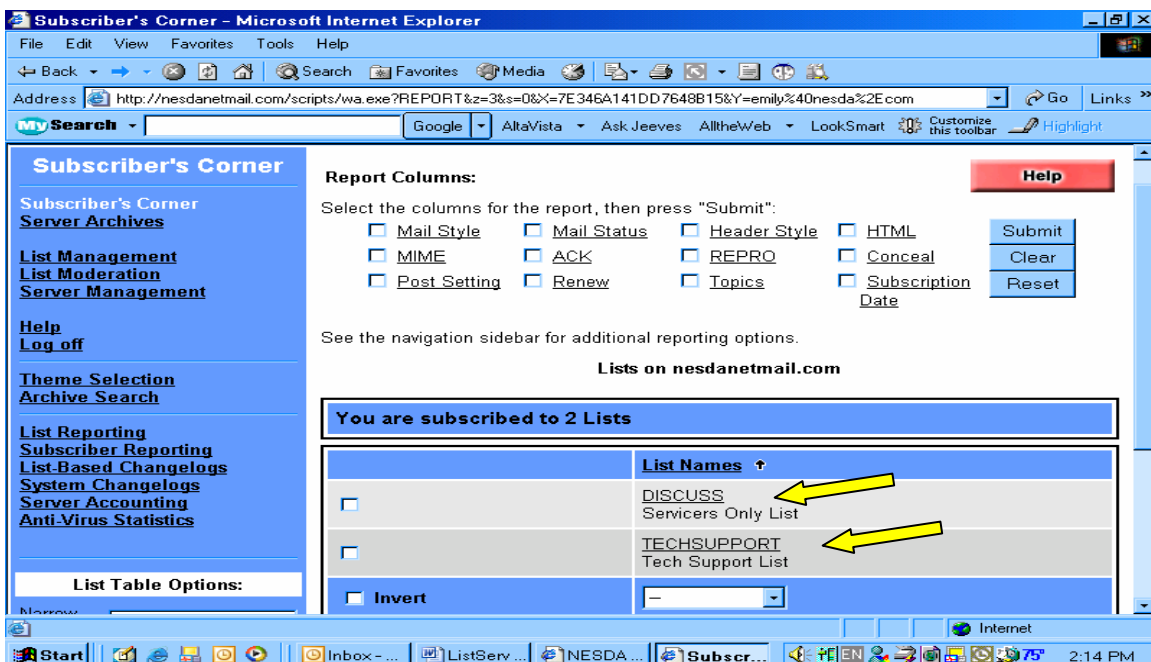
- Click on “Register Password”



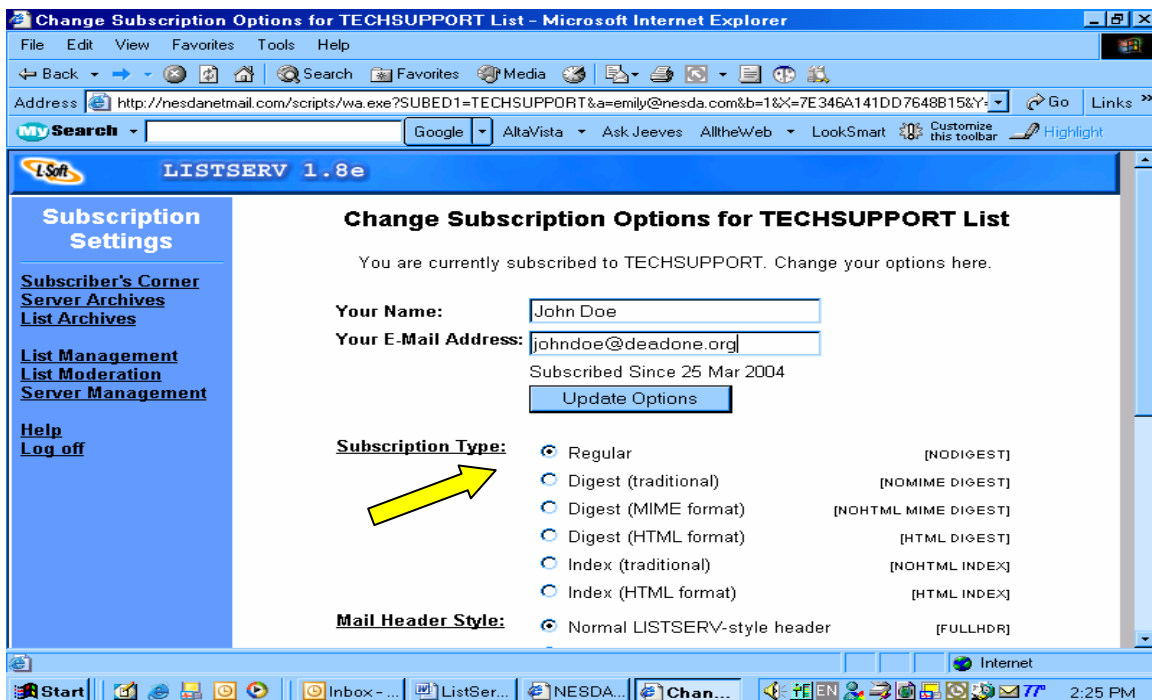
- This will send you an email verification with a link to log back in
- This password will work for you to access both lists

Changing Settings On Your Lists

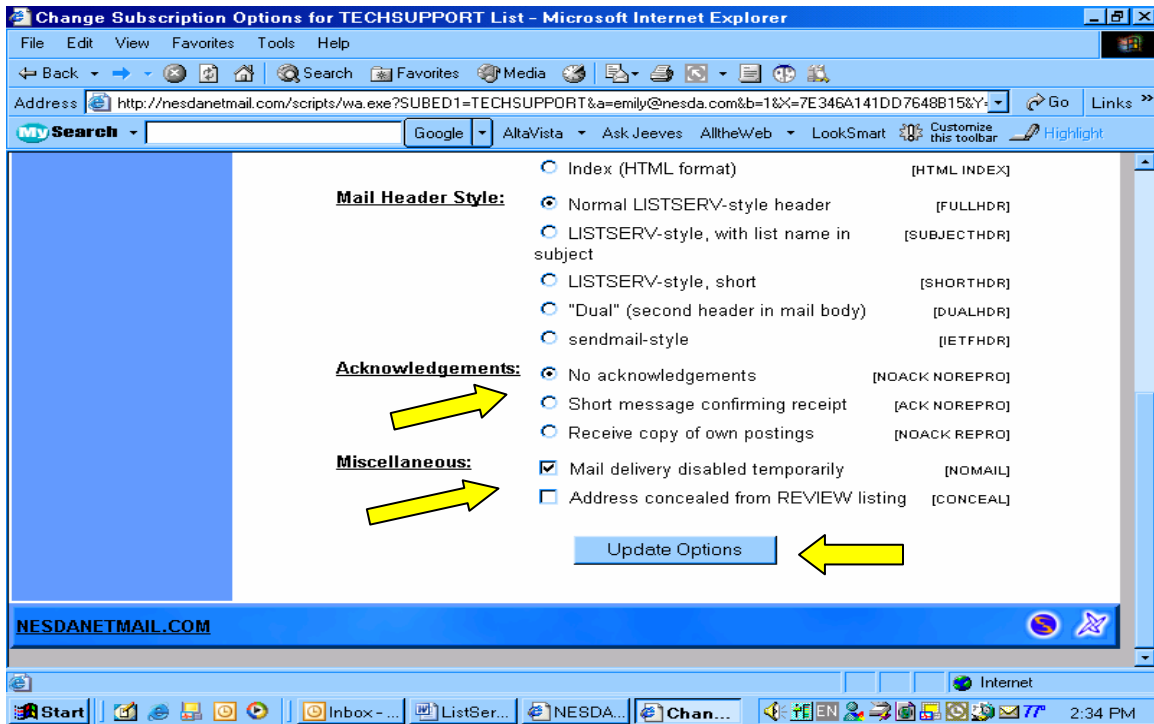
- Log into the nesdanetmail site
- Click on “Subscriber’s Corner” (as shown above)
- Click on the list you wish to modify (Discuss or TechSupport)



- To change the amount of mail you get click on one of the options under “Subscription Type”
 - **Regular** – you will receive all mail contributed to the list (100+ daily)
 - **Digest (traditional)** – you will receive one (plain text format) email with all the list contributions for that day
 - **Digest (MIME format)** - you will receive one (MIME format) email with all the list contributions for that day
 - **Digest (HTML format)** - you will receive one (HTML format) email with all the list contributions for that day
 - **Index (traditional)** - you will receive one (plain text format) email with the subject lines only of all the list contributions for that day
 - **Index (HTML format)** - you will receive one (HTML format) email with the subject lines only of all the list contributions for that day



- To change the way you receive your contribution acknowledgement go to “Acknowledgement Settings” and select one of the following
 - **No Acknowledgements** – you will not receive a copy of your postings in your email Inbox
 - **Short Message Confirming Receipt** – this will send you a message stating your contribution was received
 - **Receive Copy Of Own Postings** – you will receive the email you contributed in your email Inbox
- To change your list setting to not receive email , go to “Miscellaneous” and click on the check box next to “Mail Delivery Disabled Temporarily”



- You would then click on “Update Options” to save your changes
- You would then return to “Subscriber’s Corner” to modify your other list